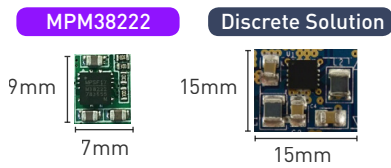


Power Module Family

MPS' power modules have a wide range of V_{IN} and I_{OUT} with a variety of packages. Our extensive portfolio of DC/DC modules integrate inductors, FETs, compensation and other passive components into a single package to simplify the design process. Choose what module works best for your design based on our beneficial features.

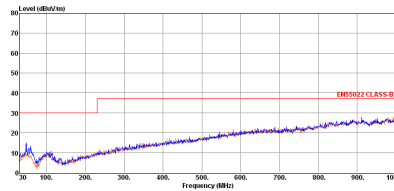
Visit MonolithicPower.com for more information.

Small Size & Ease of Use



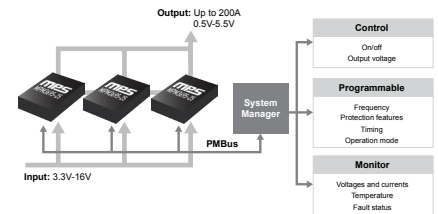
Minimal external components
Easy layout
Fast design cycle

Low EMI



Meet EN55022
Class B EMI standard

Scalability & Programmability



I2C & MTP
Graphic user interface available

MPM3515



QFN 3x5x1.6mm

- 4V to 36V V_{IN}
- 0.8V to 30.6V V_{OUT}
- Continuous 1.5A Output
- Ext clock synchronization

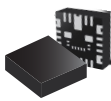
MPM3570E



LGA 10x10x4.2mm

- 4.5V to 75V V_{IN}
- 1V to 12V V_{OUT}
- Max 0.3A
- Enhanced light-load efficiency
- Ultra-low EMI noise

MPM3683-7



QFN 7x7x4mm

- 2.7V to 16V V_{IN}
- 0.6V to 5.5V V_{OUT}
- Max 8A continuous output
- Fast transient response
- Non-latch OCP, OVP, UVP

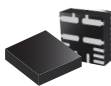
MPM3695-25



LGA 10x12x4mm

- 3V to 16V V_{IN}
- 0.5V to 5.5V V_{OUT}
- Max 25A, parallel up to 200A
- I2C interface & MTP
- GUI available

MPM38222



QFN 4x4x1.6mm

- 2.7V to 6V V_{IN}
- Dual output, max 2A
- Enhanced light-load efficiency
- Individual EN pins
- Pin-to-pin with dual 1A MPM3811

MPM3811



QFN 2x2x1.6mm

- 2.3V to 5.5V V_{IN}
- 0.6V to $D_{max} * 5.5V$
- Max 1A
- Smallest 1A module
- EN, PG pins

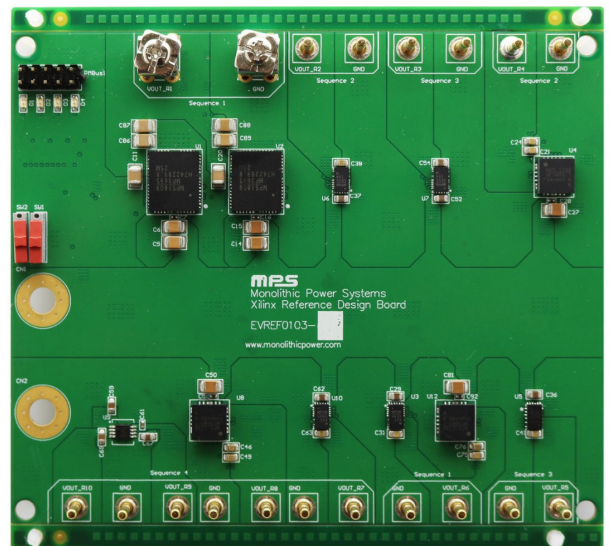
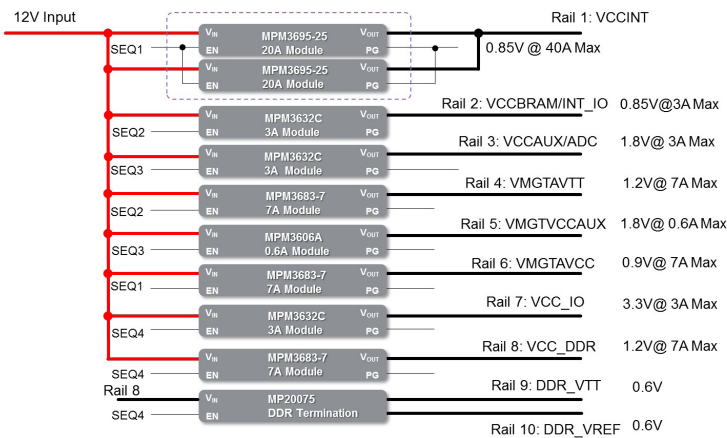


Power Module Family

Max V_{IN}	I_{OUT}	0.6A	1.2A	2A	3A	4-5A	6-8A	10A	15A	20A	30A x 2/60A
75V		NEW MPM3570E 10x10x4mm									
	55V				NEW MPM3530 10x12x4mm						
36V to 45V		MPM3506A 3x5x1.6mm	MPM3510A MPM3515 3x5x1.6mm	NEW MPM3520E 10x10x4mm							
	14V to 24V	MPM3606 MPM3606A 3x5x1.6mm	MPM3606 MPM3610A 3x5x1.6mm	MPM3620 MPM3620A 3x5x1.6mm	MPM3630 3x5x1.6mm	NEW MPM3632C 3x5x1.6mm	MPM3680 12x12x4mm	MPM3682 12x12x4mm	MPM3684 12x15x4mm	MPM3686 12x15x4mm	NEW mEZD81260A 25x15.5x7.5mm
6V		MPM3805 3x2.5x0.9mm	MPM3810 3x2.5x0.9mm	MPM3820 3x5x1.6mm	MPM3830 3x5x1.6mm	MPM3840 3x5x1.6mm					
		MPM3804 2x2x0.9mm	NEW MPM3811 2x2x1.6mm	NEW MPM3822C 2.5x3.5x1.6mm	NEW MPM3833C 2.5x3.5x1.6mm			NEW MPM3695-10 8x8x1.6mm	NEW MPM3695A-10 8x8x1.6mm	NEW MPM3695-25 12x10x4mm	

Power Module Solutions for FPGA

EVREF0103A for Kintex/Zynq Ultrascale+



FPGA Series	FPGA Part Numbers	EVB #
Virtex Ultrascale/+	VU11P, VU13P	EVREF0104-A
	VU5P, VU7P, VU9P, VU35P, VU37P	EVREF0104-B
	VU3P, VU31P, VU33P	EVREF0104-C
Kintex Ultrascale/+	KU13P, KU15P	EVREF0103-A
	KU3P, KU5P, KU9P, KU11P	EVREF0103-B
Zynq Ultrascale+ MPSoC	ZU9CG, ZU9EG, ZU11EG-ZU19EG	EVREF0101-A
	ZU3CG to ZU7EV	EVREF0101-B
Zynq 7000	XC7Z007S to XC7Z020, XC7Z030	EVREF0100-A
Zynq Ultrascale+ RFSoc	ZU21DR to ZU29DR	EVREF0102-A

Complete FPGA reference designs available at MonolithicPower.com

