

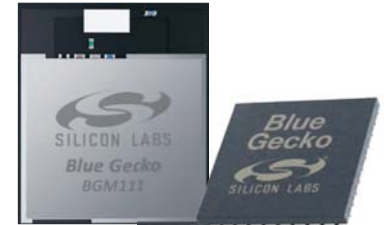
EFR32™ 32-Bit Wireless MCU



Module
MGM111A SoC
EFR32MG



SoC
EFR32FG



Module
BGM113, BGM111,
BGM121, BGM123 SoC
EFR32BG

MIGHTY GECKO

Zigbee + Thread + BT Smart +
Proprietary wireless

FLEX GECKO

Proprietary wireless
(Sub - Ghz and 2.4 Ghz)

BLUE GECKO

BT Smart + Proprietary
wireless



EFM32™ 32-bit Microcontrollers (MCUs)



PEARL
GECKO
EFM32PG



WONDER
GECKO
EFM32WG



GIANT
GECKO
EFM32GG



TINY
GECKO
EFM32TG



HAPPY
GECKO
EFM32HG



SOFTWARE



Simplicity Studio:

- Application Notes
- Data Sheets
- Reference Manual
- Driver Libraries
- Application Builder
- Network Analyzer
- Adv. Energy Monitor
- Part Configuration
- Modern Calculator
- RTOS Support

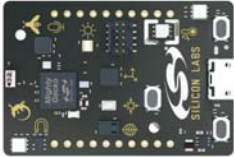
Software Stacks:

- Mesh - IEEE15.4 Zigbee/Thread
- Bluetooth Smart (BLE 4.2/BLE 5.0)
- Proprietary RAIL, Connect

Reference Designs:

- Home Automation
- Lighting

SENSOR KIT



Mighty Gecko Multi-Sensor Cloud Kit, Thunderboard Sense - \$29

DEV KITS

WIRELESS MCU KITS

- Blue Gecko BT Smart SiP Module Wireless Starter Kit SLWSTK6101C - \$99
- Blue Gecko BLE Wireless SoC Starter Kit SLWSTK6020A - \$99
- Flex Gecko 2.4 GHz and 915 MHz Wireless Starter Kit SLWSTK6060A - \$276
- Mighty Gecko Wireless Starter Kit SLWSTK6000A - \$499



MCU KIT



EFM32™ Pearl Gecko Starter Kit SLSTK3401A - \$29

PRODUCT FAMILY CHART

Family	ARM Cortex	Flash Memory (KB)	RAM (KB)	GPIO (Pins)	Packaging	Features
Flex Gecko (Wireless MCU)	M4	32, 64, 128, 256	8, 16, 32	16-31	QFN32, QFN48	Cryptography AES-128; AES-256; ECC; SHA-1; SHA-2
Blue Gecko (Wireless MCU)	M4	128, 256	16, 32	16-31	QFN32, QFN48	
Mighty Gecko (Wireless MCU)	M4	256, 768	32	16-31	QFN32, QFN48	
Zero Gecko	M0+	4, 8, 16, 32	2, 4	17-37	QFN24, QFN32, QFP48	USB - None LCD - None
Happy Gecko	M0+	32,64	4, 8	15 -37	CSP36, QFN24, QFN32, QFP48	USB - D LCD - None
Tiny Gecko	M3	4, 8, 16, 32	2, 4	17-56	BGA48, QFN24, QFN32, QFN64, QFP48, QFP64	USB - None LCD - 1-8 x 11-24
Giant Gecko	M3	512, 1024	128	50-93	BGA112, BGA120, QFN64, QFP100, QFP64	USB - D/H/O LCD - 1-8 x 16-36
Pearl Gecko	M4	128, 256	32	20-32	QFN32, QFN48	USB - None LCD - None
Wonder Gecko	M4	64, 128, 256	32	50-93	BGA112, BGA120, CSP81, QFN64, QFP100, QFP64	USB - D/H/O LCD - 1-8 x 16-36